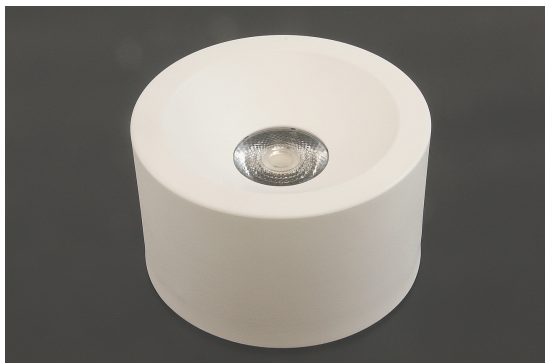
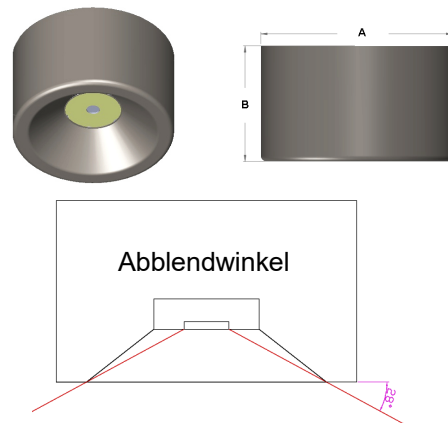
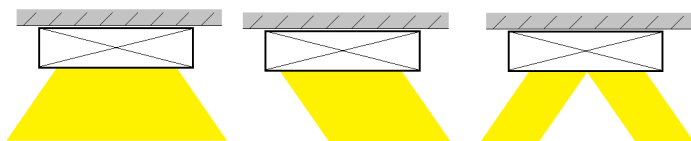


ceres A – Anbauleuchte



monos runde LED Anbauleuchte **ceres A**, Gehäuse aus Aluminium, pulverbeschichtet in RAL 9016 Weiss (andere RAL Farben auf Anfrage), EVG, CRI>80, Lebensdauer L80/B10 >50.000h, Lichtfarbtoleranz MacAdam 3, Lichtlenkung über lichttechnisch wirksame Linsenoptik leicht zurückversetzt in einen Entblendkonus Abblendwinkel 28°, Ausstrahlwinkel 36°, 60°, 90°, oval, asymmetrisch oder doppelt asymmetrisch.



Artikelnummer	Treiber	W	LM	CCT	UGR <	CRI>	Optik	A	B	Kg	Farbe
005.0001.6098	EVG	10	1190	3000	>19	80	36°	200	120	2	Weiss
005.0001.6099	EVG	10	1190	3000	>23	80	60°	200	120	2	Weiss
005.0001.6100	EVG	10	1120	3000	>23	80	90°	200	120	2	Weiss
005.0001.6101	EVG	10	1190	3000	...	80	Double Asy.	200	120	2	Weiss
005.0001.6102	EVG	10	1120	3000	...	80	Asymetric	200	120	2	Weiss
005.0001.6103	EVG	10	1050	3000	...	80	Oval	200	120	2	Weiss

Artikelnummer	Treiber	W	LM	CCT	UGR <	CRI>	Optik	A	B	Kg	Farbe
005.0001.6104	EVG	20	2321	3000	>19	80	36°	200	120	2	Weiss
005.0001.6105	EVG	20	2321	3000	>23	80	60°	200	120	2	Weiss
005.0001.6106	EVG	20	2184	3000	>23	80	90°	200	120	2	Weiss
005.0001.6107	EVG	20	2321	3000	...	80	Double Asy.	200	120	2	Weiss
005.0001.6108	EVG	20	2184	3000	...	80	Asymetric	200	120	2	Weiss
005.0001.6109	EVG	20	2048	3000	...	80	Oval	200	120	2	Weiss

Artikelnummer	Treiber	W	LM	CCT	UGR <	CRI>	Optik	A	B	Kg	Farbe
005.0001.6110	EVG	26	3094	3000	>19	80	36°	200	120	2	Weiss
005.0001.6111	EVG	26	3094	3000	>23	80	60°	200	120	2	Weiss
005.0001.6112	EVG	26	2912	3000	>23	80	90°	200	120	2	Weiss
005.0001.6113	EVG	26	3094	3000	...	80	Double Asy.	200	120	2	Weiss
005.0001.6114	EVG	26	2912	3000	...	80	Asymetric	200	120	2	Weiss
005.0001.6115	EVG	26	2730	3000	...	80	Oval	200	120	2	Weiss

ceres A – Anbauleuchte

Artikelnummer	Treiber	W	LM	CCT	UGR <	CRI>	Optik	A	B	Kg	Farbe
005.0001.6116	EVG	10	1360	4000	>19	80	36°	200	120	2	Weiss
005.0001.6117	EVG	10	1360	4000	>23	80	60°	200	120	2	Weiss
005.0001.6118	EVG	10	1280	4000	>23	80	90°	200	120	2	Weiss
005.0001.6119	EVG	10	1360	4000	...	80	Double Asy.	200	120	2	Weiss
005.0001.6120	EVG	10	1280	4000	...	80	Asymetric	200	120	2	Weiss
005.0001.6121	EVG	10	1200	4000	...	80	Oval	200	120	2	Weiss

Artikelnummer	Treiber	W	LM	CCT	UGR <	CRI>	Optik	A	B	Kg	Farbe
005.0001.6122	EVG	20	2652	4000	>19	80	36°	200	120	2	Weiss
005.0001.6123	EVG	20	2652	4000	>23	80	60°	200	120	2	Weiss
005.0001.6124	EVG	20	2496	4000	>23	80	90°	200	120	2	Weiss
005.0001.6125	EVG	20	2652	4000	...	80	Double Asy.	200	120	2	Weiss
005.0001.6126	EVG	20	2496	4000	...	80	Asymetric	200	120	2	Weiss
005.0001.6127	EVG	20	2340	4000	...	80	Oval	200	120	2	Weiss

Artikelnummer	Treiber	W	LM	CCT	UGR <	CRI>	Optik	A	B	Kg	Farbe
005.0001.6128	EVG	26	3536	4000	>19	80	36°	200	120	2	Weiss
005.0001.6129	EVG	26	3536	4000	>23	80	60°	200	120	2	Weiss
005.0001.6130	EVG	26	3328	4000	>23	80	90°	200	120	2	Weiss
005.0001.6131	EVG	26	3536	4000	...	80	Double Asy.	200	120	2	Weiss
005.0001.6132	EVG	26	3328	4000	...	80	Asymetric	200	120	2	Weiss
005.0001.6133	EVG	26	3120	4000	...	80	Oval	200	120	2	Weiss

Artikelnummer	Treiber	W	LM	CCT	UGR <	CRI>	Optik	A	B	Kg	Farbe
005.0001.6134	DALI	10	1190	3000	>19	80	36°	200	120	2	Weiss
005.0001.6135	DALI	10	1190	3000	>23	80	60°	200	120	2	Weiss
005.0001.6136	DALI	10	1120	3000	>23	80	90°	200	120	2	Weiss
005.0001.6137	DALI	10	1190	3000	...	80	Double Asy.	200	120	2	Weiss
005.0001.6138	DALI	10	1120	3000	...	80	Asymetric	200	120	2	Weiss
005.0001.6139	DALI	10	1050	3000	...	80	Oval	200	120	2	Weiss

Artikelnummer	Treiber	W	LM	CCT	UGR <	CRI>	Optik	A	B	Kg	Farbe
005.0001.6140	DALI	20	2321	3000	>19	80	36°	200	120	2	Weiss
005.0001.6141	DALI	20	2321	3000	>23	80	60°	200	120	2	Weiss
005.0001.6142	DALI	20	2184	3000	>23	80	90°	200	120	2	Weiss
005.0001.6143	DALI	20	2321	3000	...	80	Double Asy.	200	120	2	Weiss
005.0001.6144	DALI	20	2184	3000	...	80	Asymetric	200	120	2	Weiss
005.0001.6145	DALI	20	2048	3000	...	80	Oval	200	120	2	Weiss

Artikelnummer	Treiber	W	LM	CCT	UGR <	CRI>	Optik	A	B	Kg	Farbe
005.0001.6146	DALI	26	3094	3000	>19	80	36°	200	120	2	Weiss
005.0001.6147	DALI	26	3094	3000	>23	80	60°	200	120	2	Weiss



ceres A – Anbauleuchte

Artikelnummer	Treiber	W	LM	CCT	UGR <	CRI>	Optik	A	B	Kg	Farbe
005.0001.6148	DALI	26	2912	3000	>23	80	90°	200	120	2	Weiss
005.0001.6149	DALI	26	3094	3000	...	80	Double Asy.	200	120	2	Weiss
005.0001.6150	DALI	26	2912	3000	...	80	Asymetric	200	120	2	Weiss
005.0001.6151	DALI	26	2730	3000	...	80	Oval	200	120	2	Weiss

Artikelnummer	Treiber	W	LM	CCT	UGR <	CRI>	Optik	A	B	Kg	Farbe
005.0001.6152	DALI	10	1360	4000	>19	80	36°	200	120	2	Weiss
005.0001.6153	DALI	10	1360	4000	>23	80	60°	200	120	2	Weiss
005.0001.6154	DALI	10	1280	4000	>23	80	90°	200	120	2	Weiss
005.0001.6155	DALI	10	1360	4000	...	80	Double Asy.	200	120	2	Weiss
005.0001.6156	DALI	10	1280	4000	...	80	Asymetric	200	120	2	Weiss
005.0001.6157	DALI	10	1200	4000	...	80	Oval	200	120	2	Weiss

Artikelnummer	Treiber	W	LM	CCT	UGR <	CRI>	Optik	A	B	Kg	Farbe
005.0001.6158	DALI	20	2652	4000	>19	80	36°	200	120	2	Weiss
005.0001.6159	DALI	20	2652	4000	>23	80	60°	200	120	2	Weiss
005.0001.6160	DALI	20	2496	4000	>23	80	90°	200	120	2	Weiss
005.0001.6161	DALI	20	2652	4000	...	80	Double Asy.	200	120	2	Weiss
005.0001.6162	DALI	20	2496	4000	...	80	Asymetric	200	120	2	Weiss
005.0001.6163	DALI	20	2340	4000	...	80	Oval	200	120	2	Weiss

Artikelnummer	Treiber	W	LM	CCT	UGR <	CRI>	Optik	A	B	Kg	Farbe
005.0001.6164	DALI	26	3536	4000	>19	80	36°	200	120	2	Weiss
005.0001.6165	DALI	26	3536	4000	>23	80	60°	200	120	2	Weiss
005.0001.6166	DALI	26	3328	4000	>23	80	90°	200	120	2	Weiss
005.0001.6167	DALI	26	3536	4000	...	80	Double Asy.	200	120	2	Weiss
005.0001.6168	DALI	26	3328	4000	...	80	Asymetric	200	120	2	Weiss
005.0001.6169	DALI	26	3120	4000	...	80	Oval	200	120	2	Weiss